



Charting a Course to #1

Dr. Eric Hall, Chancellor for Innovation

October 2, 2019



FLORIDA DEPARTMENT OF
EDUCATION
fldoe.org

www.FLDOE.org

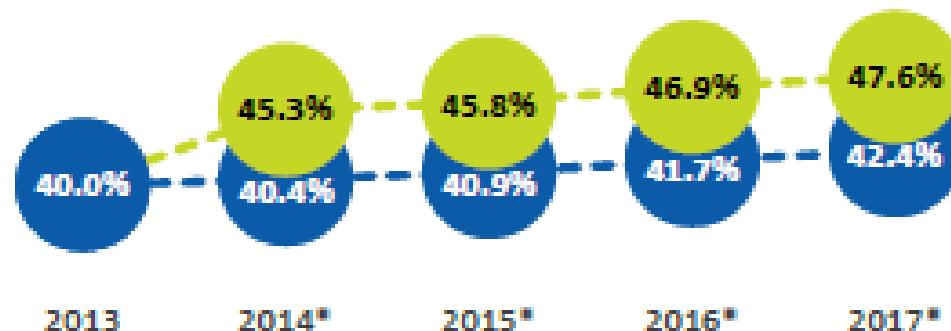
Welcome to the 2019 ACE Annual Conference

- ACE of Florida has worked diligently to provide a line-up of excellent sessions that are sure to make an impact in your schools.
- The sessions are loaded with strategies to prepare adult education teachers and administrators to lead their students toward success in their education goals.
- The sessions will engage and empower attendees to incorporate educational choices that lead to student success.

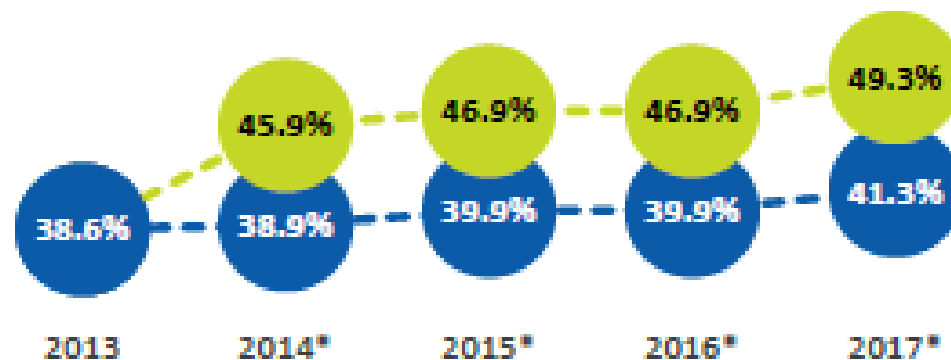
Attainment Progress

Residents with a high-quality degree or credential

UNITED STATES
47.6% ↑ 7.6%
since 2013



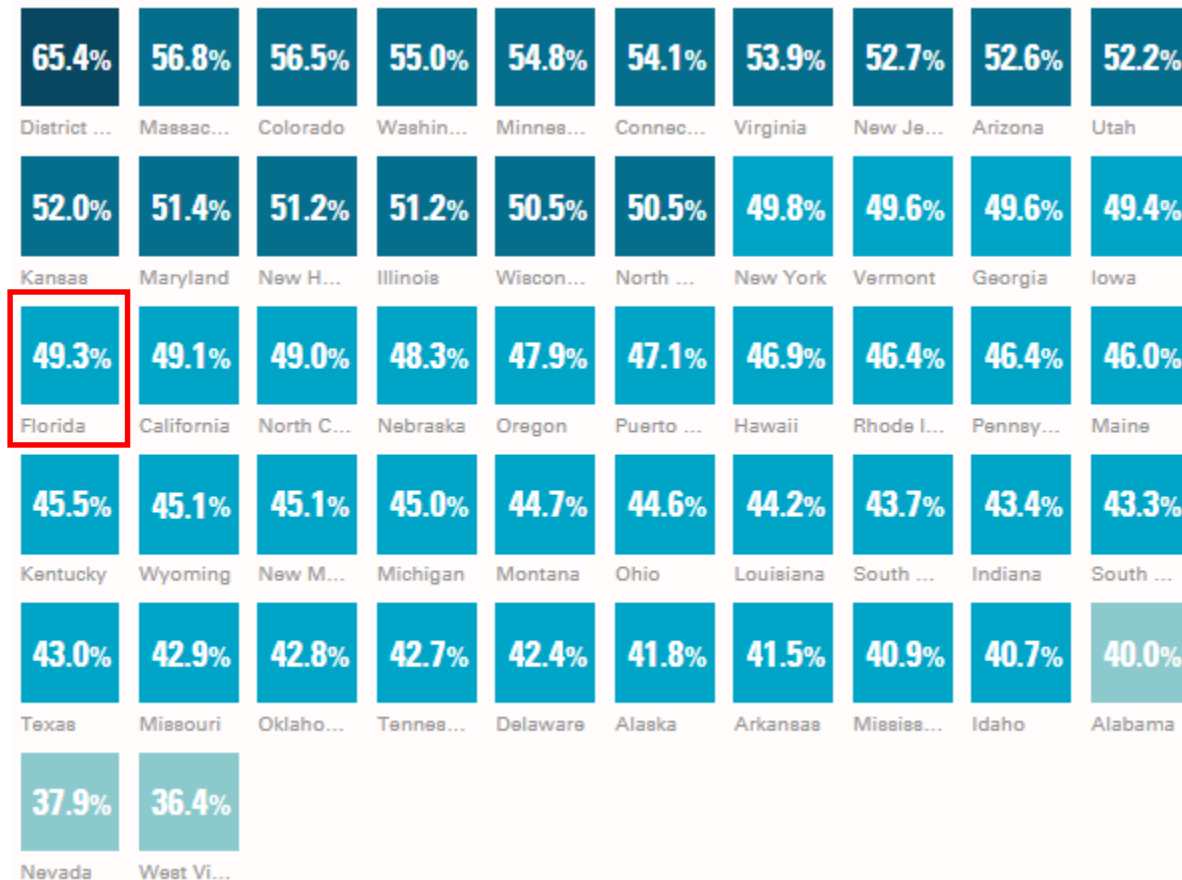
FLORIDA
49.3% ↑ 10.7%
since 2013
ranks 20th among all states in the U.S.



■ 2-year degree or higher ■ Includes workforce-relevant certificates

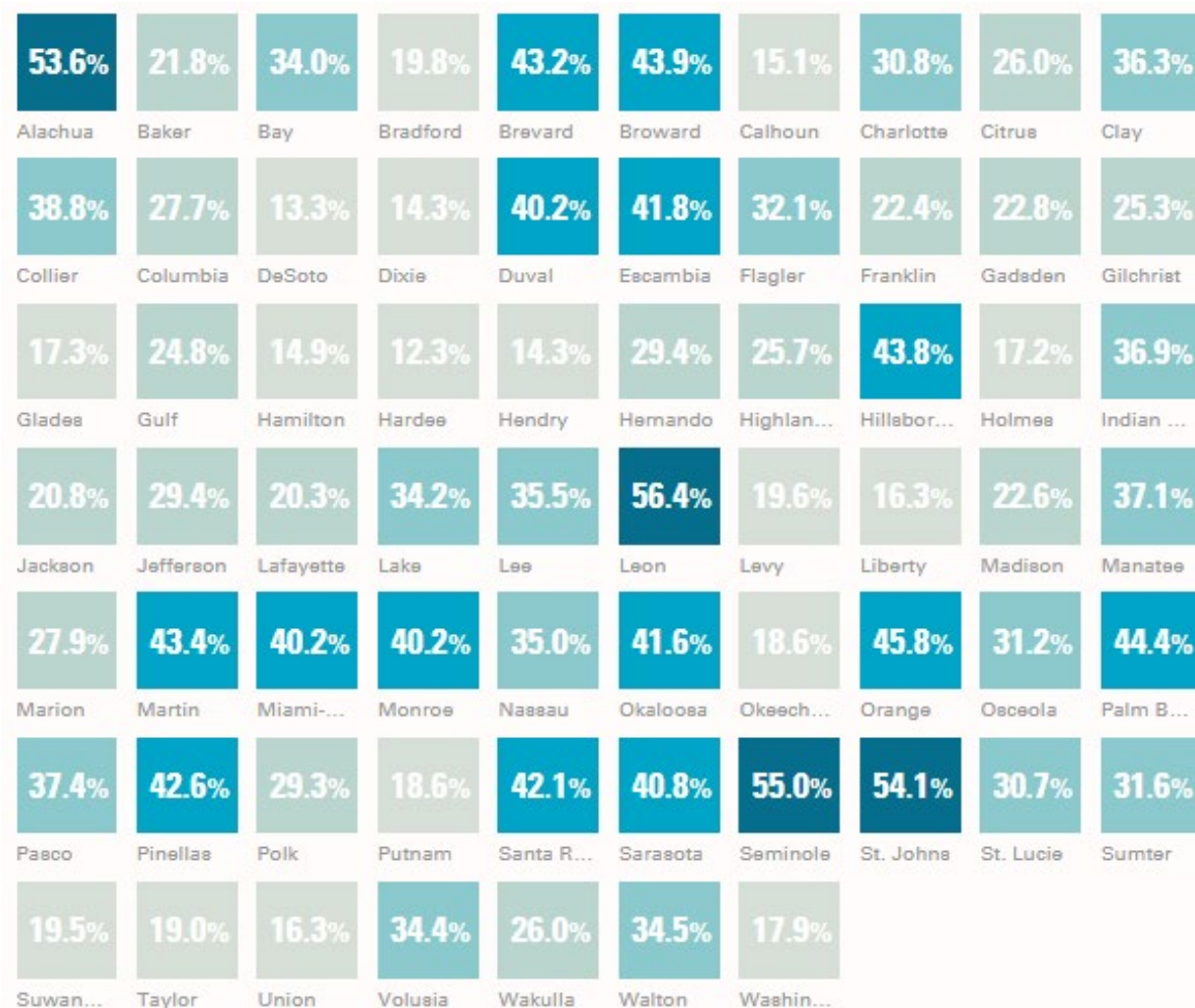
*An estimated 8% of Florida residents and 5.2% of U.S. residents hold a workforce-relevant certificate, according to Lumina Foundation. These data are not yet available at the county level.

Florida Ranks #20 Among States in Educational Attainment Beyond High School



Source: Lumina Foundation's "A Stronger Nation" <http://strongernation.luminafoundation.org/report/2019/#nation>

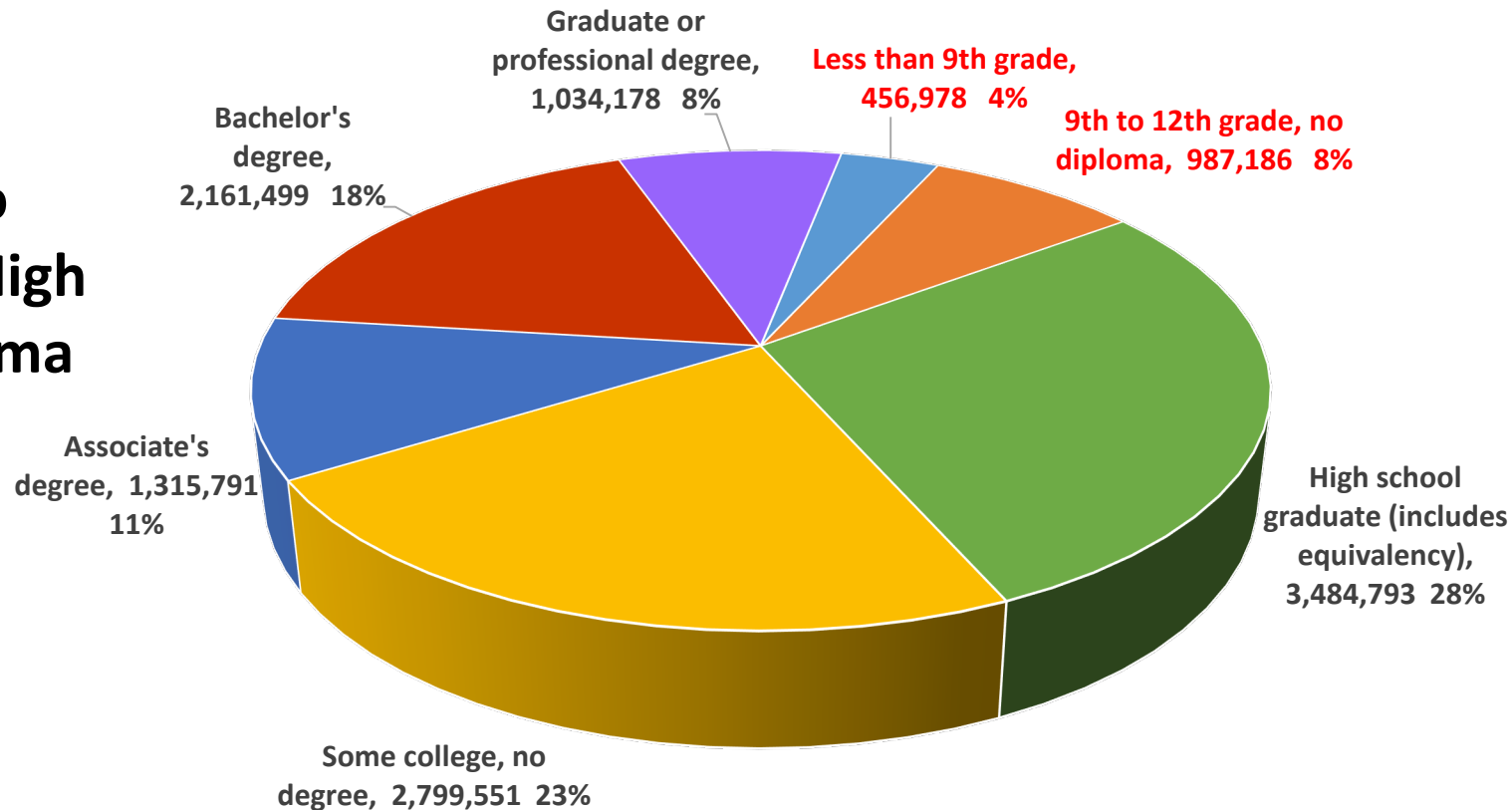
Degree Attainment by County (at least AA) – 2019



Source: Lumina Foundation's "A Stronger Nation" <http://strongernation.luminafoundation.org/report/2019/#nation>

About 12% of Florida's Working Age Population Do Not Have a High School Diploma

**1.4 Million
Working Age
Floridians Do
Not Have a High
School Diploma**



Trends in Florida to Consider

- 42% of Florida adults had no education beyond high school (2017)*
- Acceleration of automation and artificial intelligence will have a significant impact on Florida's workforce, particularly those in the top 5 industries:**
 - Food Preparation & Serving
 - Sales
 - Office & Administrative
 - Production
 - Transportation

**SREB, Education, Automation and the Workforce – Florida State Impact (Meagan Crowe)*

*** SREB Region's Economic Outlook, June 2019*



Why is 2030 such an important year?

- Today's 1st graders will be graduating from high school – will they be ready for the next generation of career opportunities?
- “For every 55 dependent people in Florida, there will be just 45 working-age adults to provide for them.”

SREB, Education, Automation and the Workforce – Florida State Impact (Meagan Crowe)

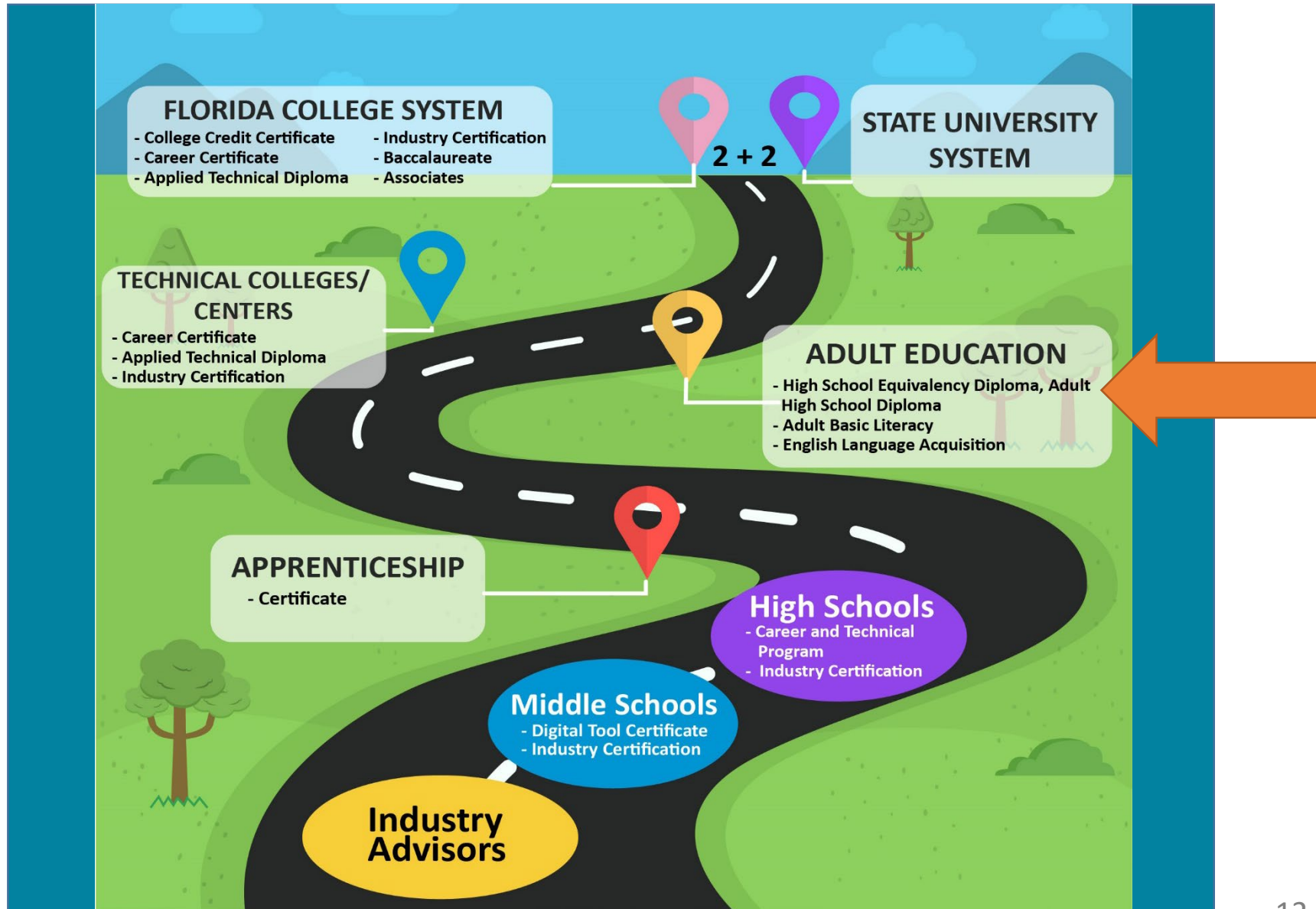
Adult Education's Role

Governor's Executive Order Number 19-31

- <http://www.fldoe.org/careerpathways>
- A knowledgeable and skilled workforce is essential for future economic growth and expanded opportunity.
- Our role is to provide adult students with the opportunity to further their education so they can have the skills to find meaningful work and enjoy productive careers.

Workforce Innovation and Opportunity Act (WIOA)

- AEFLA funds received for 2019-20:
 - Adult General Education: \$36,079,524
 - Integrated English Literacy and Civics Education: \$8,565,478



BE BOLD!



www.FLDOE.org



www.FLDOE.org