



BURLINGTON ENGLISH®

THE PUBLISHER THAT CARES

# Transform Your Classroom



with

**Burlington  
Core**

Innovative Teaching Made Easy

BURLINGTON



# Presented by...



**Lori Wedner**





**In these uncertain times,  
BurlingtonEnglish is here  
to help you serve your  
ESL students virtually  
and face to face.**

[www.BurlingtonEnglish.com](http://www.BurlingtonEnglish.com)



# Objectives

1. Identify three key features of **Burlington Core**
2. View detailed lesson plans
3. Experience web-based lessons for teacher-led instruction
4. Experience web-based lessons for students
5. Understand how **Burlington Core** can transform your virtual and face-to-face classroom for teachers and students





## **Objective 1:**

Identify three key features of **Burlington Core**

- 1. 100% Web-based**
- 2. Standards-based Core Curriculum**
- 3. Blended Learning Program**





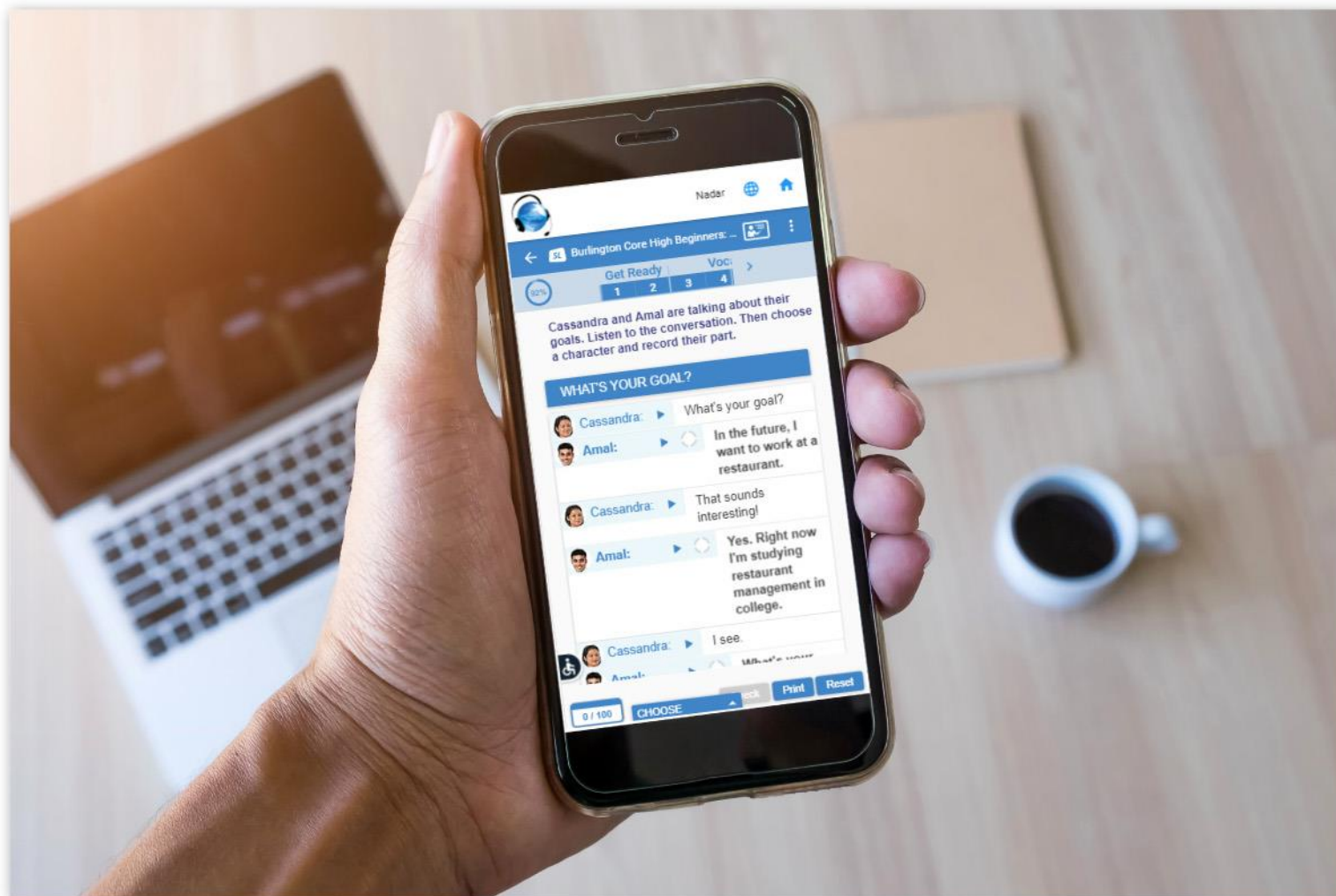
# What Does it Mean that We're 100% Web-based?

**Complete Access ► Anytime ► Anywhere**





# Including all Mobile Devices







# What Makes Us a Core Curriculum?

IELCE and IET

**WIOA**

Workforce Innovation and Opportunity Act

Standards Based

College and Career  
Readiness Standards  
for Adult Education

Revised November  
2012



AMEP

**CCRS**  
3 shifts=CEK

ENGLISH LANGUAGE  
PROFICIENCY  
STANDARDS FOR  
ADULT EDUCATION

With Correspondence to College and Career Readiness  
Standards for English Language Arts and Literacy, and  
Mathematical and Science Practices

October 2015



WIOA

**ELPS**



Covers NRS Levels 1-6

Educational Functioning Levels

- |   |                        |
|---|------------------------|
| 1 | Beginning ESL Literacy |
| 2 | Low Beginning ESL      |
| 3 | High Beginning ESL     |
| 4 | Low Intermediate ESL   |
| 5 | High Intermediate ESL  |
| 6 | Advanced ESL           |

More than  
100 Hours  
per Level

**100**  
**HOURS**

Correlated to CASAS  
and State Standards

CASAS COMPETENCIES  
Essential Life and Work Skills for Youth and Adults



4 Skills and Grammar

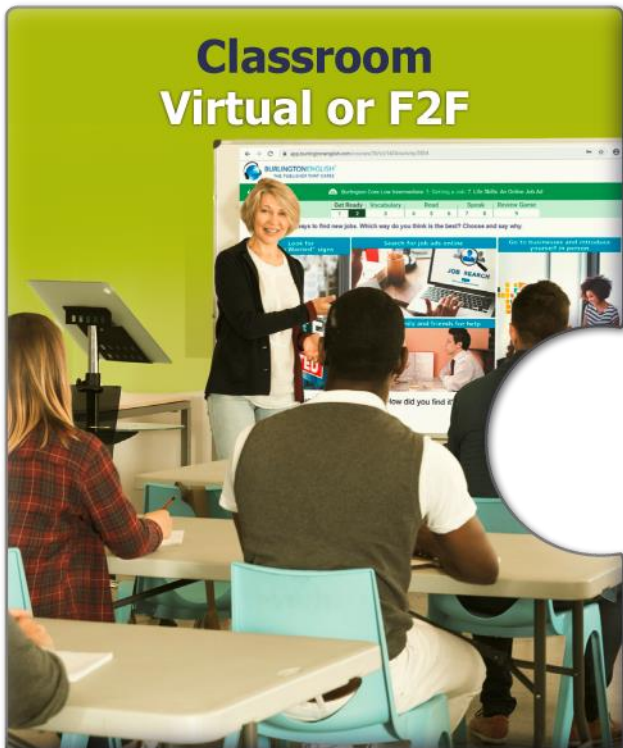




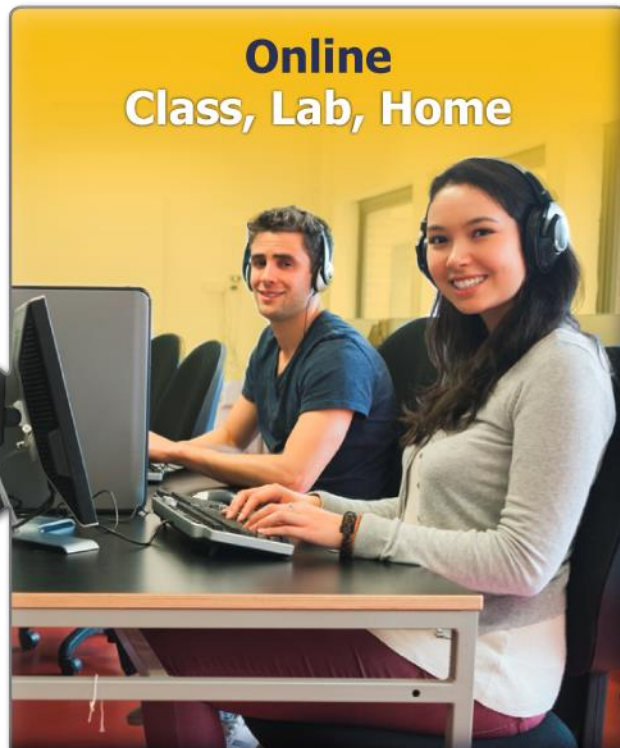


# What Makes Burlington Core a Blended Program?

## Classroom Virtual or F2F

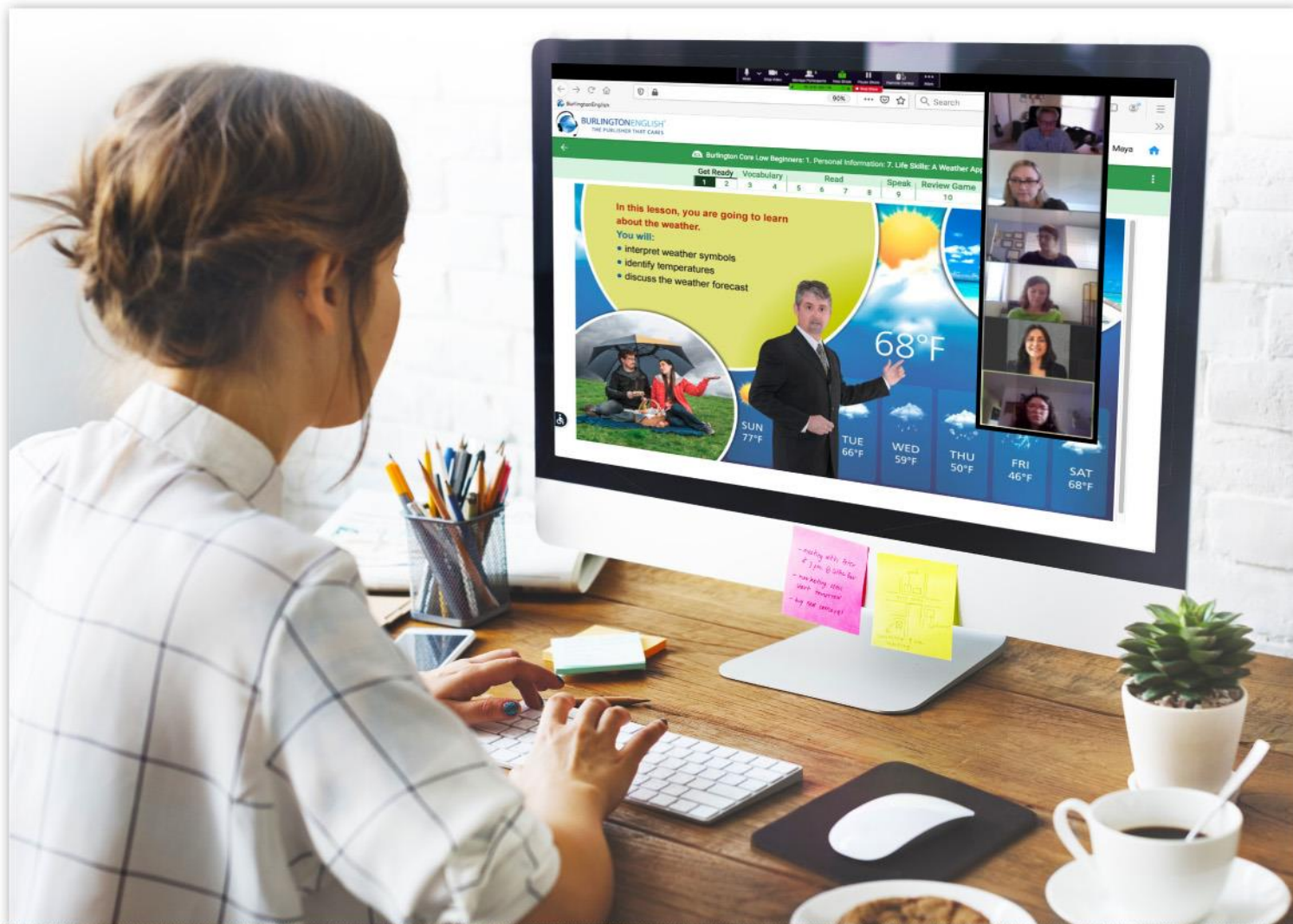


## Online Class, Lab, Home





# The Virtual Burlington Classroom







# The F2F Burlington Classroom

The screen displays the Burlington English interface for a lesson titled "Burlington Core High Beginners: 6. In the Workplace: 5. Watch & Speak: Solving Customers' Problems". The interface includes a progress bar with sections: Get Ready (1-2), Vocabulary (3-4), Watch (5-6), Speak (7-9), and Review Game (10). The current section is "Watch", and the user is Nadine Zar.

**Solving Problems**  
When you work with customers, be helpful. When a customer has a problem, try to solve it.

Click above to watch the video again. How do the hostess and the server solve Mr. and Mrs. Young's problems? Choose the correct answers.

1. Problem 1: Their table isn't ready.

- ☐ a. The hostess gives them drinks while they wait.
- ☐ b. The hostess gives them drinks after they wait.

2. Problem 2: Mr. Young doesn't like their table.

- ☐ a. The hostess offers him a different table.
- ☐ b. The hostess takes them to the bar.

3. Problem 3: The server brings the wrong food.

- ☐ a. The server brings them salads, free of charge.
- ☐ b. The server brings them the food they ordered.

**NOW YOU:** Did you ever solve a customer's problem? What was the problem and what did you do?

Buttons: Check, Show First Answer, Show All Answers





## **Objectives 2, 3, and 4:**

- 2.** View detailed lesson plans
- 3.** Experience web-based lessons for teacher-led instruction
- 4.** Experience web-based lessons for students





# Transforming Classrooms with Burlington Core

Hundreds of thousands of ESL students from over a thousand adult education programs across the country are achieving success using **BurlingtonEnglish**.

In the fall of 2019, more than 100 teachers from these programs piloted the **NEW Burlington Core** curriculum. In a follow-up teacher survey:

99%

say **Burlington Core** has positively impacted classroom instruction



“I love using the **Burlington English** program because it allows me to differentiate instruction. There are so many resources for teachers to use ... from worksheets to complete lesson plans to In-Class Lessons (ICLs).”

*Amal Awad-Jumah, ESL Instructor  
Dearborn Public Schools, Dearborn, MI*



92%



say **Burlington Core** has contributed to students making significant learning gains on standardized tests

"After completing my first round of post-tests and achieving several gains, I believe the results speak volumes for the validity of this program."

*Stephanie Rintala, ELL & Basic Education Instructor  
Mid-State Technical College, Stevens Point, WI*

81%



prefer teaching with **Burlington Core** over a traditional textbook series

"**Burlington Core** has features that have positively impacted my students' learning. My students are more confident about using computers now. The program is very innovative, and I would not hesitate to use it instead of a traditional textbook."

*Lizeth Moyao, Instructional Specialist III  
Mountain View College, Dallas, TX*

80%



say **Burlington Core** has increased student retention in class

"Getting students up and out of their seats and working with the technology really excites and engages them with the curriculum ... We were just checking our attendance registers, and this time of year, as we're approaching Thanksgiving, we sometimes see a drop in attendance, but not now!"

*Dr. Patricia Bazanos, Principal  
Moreno Valley Community Adult School, Moreno Valley, CA*





## Objectives

1. Identify three key features of **Burlington Core**
2. View detailed lesson plans
3. Experience web-based lessons for teacher-led instruction
4. Experience web-based lessons for students
5. Understand how **Burlington Core** can transform your virtual and face-to-face classroom for teachers and students



# Wrap-up and Q&A

