



## 2023 Southeast Regional ACE



INTRODUCTION

SETTING THE STAGE

BEST PRACTICE #1

BEST PRACTICE #2

BEST PRACTICE #3

BEST PRACTICE #4

BEST PRACTICE #5

TAKEAWAYS

# MEET YOUR PRESENTER



**Brittney Napolitano**

Educator Support Specialist

[Brittney@essentialed.com](mailto:Brittney@essentialed.com)

**Educator Support Team**

AJ, Laura, Steph, & Jenna  
[support@essentialed.com](mailto:support@essentialed.com)

(800) 931-8069 ext. 4



# CHECKING IN

WHAT IS WORK READY?

**DIGITAL LITERACY**

FINANCIAL LITERACY

EMPLOYABILITY SKILLS

IMPLEMENTATION

SUMMARY

QUESTIONS AND ANSWERS

This session WILL be interactive!



We will be using Padlet for this activity. Post-it away!

<https://padlet.com/brittney33/wv-essential-ed-session-1-abe-hiset-iet-esl-cxo6caeh93cyww26>

INTRODUCTION

SETTING THE STAGE

BEST PRACTICE #1

BEST PRACTICE #2

BEST PRACTICE #3

BEST PRACTICE #4

BEST PRACTICE #5

TAKEAWAYS

# SETTING THE STAGE

## Common Challenges of Implementing Online Curricula

- Implementation of a new resource isn't always discussed or planned ahead of time
- Unclear expectations from local, state, or federal leaders
- Pressure to be an expert or to know everything all at once
- More comfort in tried and true methods
- Lack of technology and internet access

INTRODUCTION

SETTING THE STAGE

BEST PRACTICE #1

BEST PRACTICE #2

BEST PRACTICE #3

BEST PRACTICE #4

BEST PRACTICE #5

TAKEAWAYS

# SETTING THE STAGE

## Benefits of Implementing Online Curricula

- Increases access and removes barriers
- Increases students' study time
- Increases the effectiveness of study time
- Differentiates instruction
- Has the ability to meet several learning styles

INTRODUCTION

SETTING THE STAGE

DEVELOP A PLAN

BEST PRACTICE #2

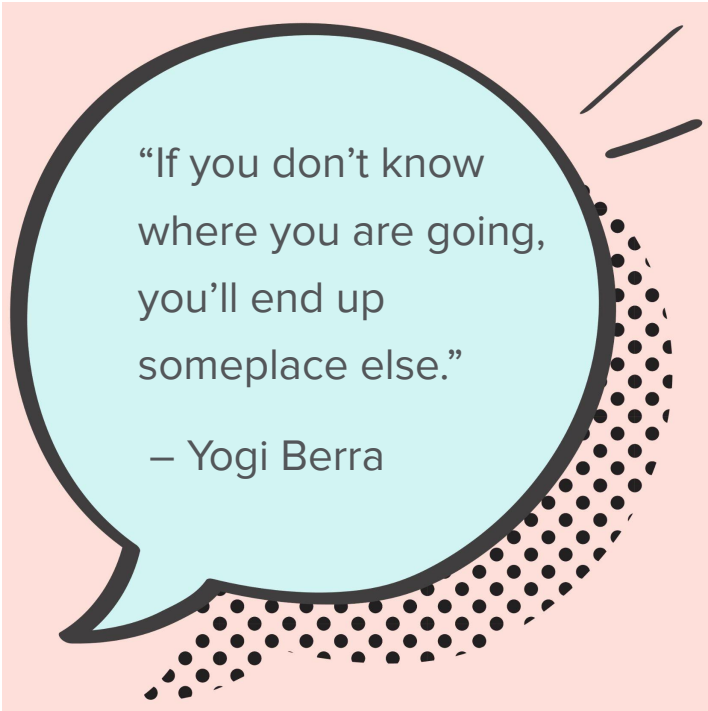
BEST PRACTICE #3

BEST PRACTICE #4

BEST PRACTICE #5

TAKEAWAYS

# DEVELOP A PLAN



“If you don’t know  
where you are going,  
you’ll end up  
someplace else.”

– Yogi Berra

INTRODUCTION

SETTING THE STAGE

DEVELOP A PLAN

BEST PRACTICE #2

BEST PRACTICE #3

BEST PRACTICE #4

BEST PRACTICE #5

TAKEAWAYS

# DEVELOP A PLAN

## Considerations

- Expectations from Higher Ups
- Technology
- Time
- Instruction
- Other



## Ask Yourself These Questions



INTRODUCTION

SETTING THE STAGE

DEVELOP A PLAN

PROVIDE A STUDENT  
ORIENTATION

BEST PRACTICE #3

BEST PRACTICE #4

BEST PRACTICE #5

TAKEAWAYS

# PROVIDE A STUDENT ORIENTATION

How do you introduce Essential Education to your students?



INTRODUCTION

SETTING THE STAGE

DEVELOP A PLAN

PROVIDE A STUDENT  
ORIENTATION

BEST PRACTICE #3

BEST PRACTICE #4

BEST PRACTICE #5

TAKEAWAYS

# PROVIDE A STUDENT ORIENTATION

## 4 Key Elements of a Successful Orientation

- 1) Familiarize yourself first
- 2) Think through and communicate expectations with students
- 3) Provide students with [login guides](#) or other resources
- 4) Give students an overview and tour of the system

INTRODUCTION

SETTING THE STAGE

DEVELOP A PLAN

PROVIDE A STUDENT  
ORIENTATION

BEST PRACTICE #3

BEST PRACTICE #4

BEST PRACTICE #5

TAKEAWAYS

# PROVIDE A STUDENT ORIENTATION

## Provide Overview and Guided Practice to Students

### **In-Person or Remote Classrooms**

- Introduce what Essential Education is and why you will be using it
- Pass out Student Login Guide (with specific student info already filled in)
- Use projector and show students how to log in, select a course, take assessment, and access lessons (or share your screen if remote)
- Watch student homeroom video as a class. Ask students to write down questions or thoughts they have while watching
- Discuss expectations of use
- Provide students time to log in on their own, take their assessment, explore the student homeroom (move around the room checking on students)

INTRODUCTION

SETTING THE STAGE

DEVELOP A PLAN

PROVIDE A STUDENT  
ORIENTATION

INCORPORATE OUR CONTENT  
INTO YOUR CLASSROOM

BEST PRACTICE #4

BEST PRACTICE #5

TAKEAWAYS

# INCORPORATE CONTENT INTO YOUR CLASSROOM

What ways do you use Essential Education in and out of your classroom?



INTRODUCTION

SETTING THE STAGE

DEVELOP A PLAN

PROVIDE A STUDENT  
ORIENTATION

INCORPORATE OUR CONTENT  
INTO YOUR CLASSROOM

BEST PRACTICE #4

BEST PRACTICE #5

TAKEAWAYS

# INCORPORATE CONTENT INTO YOUR CLASSROOM

- Warm up or welcome activity
- Preview content and assign lessons
- Project Essential Education lessons or content for whole group activities
- Remediate small groups with specific content
- Rotation model

INTRODUCTION

SETTING THE STAGE

DEVELOP A PLAN

PROVIDE A STUDENT  
ORIENTATION

INCORPORATE CONTENT INTO  
YOUR CLASSROOM

BEST PRACTICE #4

BEST PRACTICE #5

TAKEAWAYS

# INCORPORATE CONTENT INTO YOUR CLASSROOM

- Projecting a question of the day
- Flipped classroom
- Use practice tests to build test readiness
- Use the lessons for prep ideas, taking questions from the lessons and creating questions of the day, flash cards etc.
- Use questions in lessons as in-class competition or game

INTRODUCTION

SETTING THE STAGE

DEVELOP A PLAN

PROVIDE A STUDENT  
ORIENTATION

INCORPORATE CONTENT INTO  
YOUR CLASSROOM

BEST PRACTICE #4

BEST PRACTICE #5

TAKEAWAYS

# INCORPORATE CONTENT INTO YOUR CLASSROOM

Are there any other ideas or ways to use Essential Education?



INTRODUCTION

SETTING THE STAGE

DEVELOP A PLAN

PROVIDE A STUDENT  
ORIENTATION

INCORPORATE CONTENT INTO  
YOUR CLASSROOM

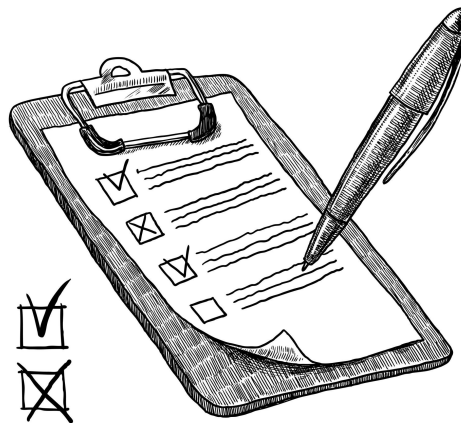
MONITOR STUDENT PROGRESS

BEST PRACTICE #5

TAKEAWAYS

# MONITOR STUDENT PROGRESS

How do you monitor student progress?





# MONITOR STUDENT PROGRESS

INTRODUCTION

SETTING THE STAGE

DEVELOP A PLAN

PROVIDE A STUDENT  
ORIENTATION

INCORPORATE CONTENT INTO  
YOUR CLASSROOM

MONITOR STUDENT PROGRESS

BEST PRACTICE #5

TAKEAWAYS



## STUDY TIME

See how many hours students are spending in the software



## STUDENT READINESS

See when students are ready to take an official HSE test (*"Practice Test" report for ABE Academies*)



## SKILL MASTERY

See how students are performing on average for each content standard



## STUDENT SUMMARY

See students' time and scores on each completed lesson

INTRODUCTION

SETTING THE STAGE

DEVELOP A PLAN

PROVIDE A STUDENT  
ORIENTATION

INCORPORATE CONTENT INTO  
YOUR CLASSROOM

MONITOR STUDENT PROGRESS

PROVIDE FEEDBACK

TAKEAWAYS

# PROVIDE FEEDBACK

How do you provide feedback to your students?



INTRODUCTION

SETTING THE STAGE

DEVELOP A PLAN

PROVIDE A STUDENT  
ORIENTATION

INCORPORATE CONTENT INTO  
YOUR CLASSROOM

MONITOR STUDENT PROGRESS

PROVIDE FEEDBACK

TAKEAWAYS

# PROVIDE FEEDBACK

What are ways to provide feedback?

- Daily shoutouts
- Look at reports/activity, write shoutouts or names on the board for students to see
- Group praise based on diligence/engagement of in-class or other activity
- Study time, lessons completed, HSE readiness based on practice tests

INTRODUCTION

SETTING THE STAGE

DEVELOP A PLAN

PROVIDE A STUDENT  
ORIENTATION

INCORPORATE CONTENT INTO  
YOUR CLASSROOM

MONITOR STUDENT PROGRESS

PROVIDE FEEDBACK

TAKEAWAYS

# PROVIDE FEEDBACK

## How you can incorporate Essential Education

- LMS messaging
- One-on-one conferences discussing report data
  - Study Time, Student Summary, and Student Overview
- Grade students' practice test essays
  - Use system's pre-generated feedback
- Discuss the progress widget with students

# DIFFERENTIATE INSTRUCTION

What methods do you implement to scaffold learning for diverse learners?



INTRODUCTION

SETTING THE STAGE

PROVIDE A STUDENT  
ORIENTATION

INCORPORATE CONTENT INTO  
YOUR CLASSROOM

MONITOR STUDENT PROGRESS

PROVIDE FEEDBACK

DIFFERENTIATE INSTRUCTION

CONCLUSION

INTRODUCTION

SETTING THE STAGE

DEVELOP A PLAN

PROVIDE A STUDENT  
ORIENTATION

INCORPORATE CONTENT INTO  
YOUR CLASSROOM

MONITOR STUDENT PROGRESS

PROVIDE FEEDBACK

CLASSROOM MANAGEMENT  
TIPS

# STRIVE FOR PRESENCE

Essential Education's LMS is adaptive and can be used for independent learning, but teachers are still so vital to students' success.

## While students are working with Essential Education

- Be active in your physical or online space
- Be mentally engaged
- Know what your students are learning and provide feedback

INTRODUCTION

SETTING THE STAGE

DEVELOP A PLAN

PROVIDE A STUDENT  
ORIENTATION

INCORPORATE OUR CONTENT  
INTO YOUR CLASSROOM

MONITOR STUDENT PROGRESS

PROVIDE FEEDBACK

CLASSROOM MANAGEMENT  
TIPS

# MAINTAIN PERSISTENCE AND ENGAGEMENT

What are ways to do this?

- Games or competitions
- Check in with students
- Goal setting and chunking goals
- Celebrate progress
- Motivational videos in LMS

SETTING THE STAGE

PROVIDE A STUDENT  
ORIENTATION

DEVELOP A PLAN

PROVIDE A STUDENT  
ORIENTATION

INCORPORATE OUR CONTENT  
INTO YOUR CLASSROOM

MONITOR STUDENT PROGRESS

DIFFERENTIATE INSTRUCTION

PROVIDE FEEDBACK

# TAKE ADVANTAGE OF OUR RESOURCES

What resources are available?

- Educator Support Team and Student Help Team
- 1-on-1 and small or large group trainings
- Guides, supports, and video series
- TWEEDs and Live Coaching Sessions
- On-demand training videos
- Help Center



SETTING THE STAGE

DEVELOP A PLAN

PROVIDE A STUDENT  
ORIENTATION

INCORPORATE OUR CONTENT  
INTO YOUR CLASSROOM

MONITOR STUDENT PROGRESS

PROVIDE FEEDBACK

DIFFERENTIATE INSTRUCTION

TAKE ADVANTAGE OF OUR  
RESOURCES

# WHAT WAS MISSED?

What are your tried and true best practices for implementing Essential Education or other resources for diverse learners?



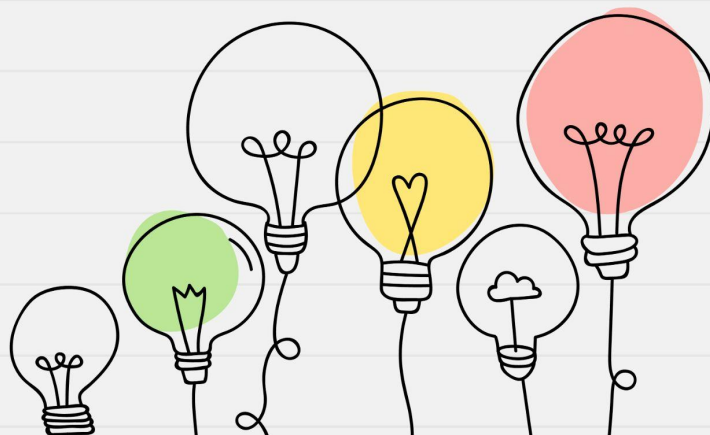
# REFLECTION

Write down three takeaways from today's session that you will try out, reflect upon, or discuss with colleagues

1)

2)

3)



INTRODUCTION

SETTING THE STAGE

DEVELOP A PLAN

PROVIDE A STUDENT  
ORIENTATION

INCORPORATE OUR CONTENT  
INTO YOUR CLASSROOM

MONITOR STUDENT PROGRESS  
& PROVIDE FEEDBACK

DIFFERENTIATE INSTRUCTION

TAKEAWAYS

INTRODUCTION

DEVELOP A PLAN

PROVIDE A STUDENT ORIENTATION

INCORPORATE OUR CONTENT INTO YOUR CLASSROOM

MONITOR STUDENT PROGRESS

PROVIDE FEEDBACK

DIFFERENTIATE INSTRUCTION

TAKE ADVANTAGE OF OUR RESOURCES

# CONTACT US



**Brittney Napolitano**  
Educator Support Specialist  
[Brittney@essentialed.com](mailto:Brittney@essentialed.com)

**Educator Support Team**  
AJ, Laura, Stehpanie, & Jenna  
[support@essentialed.com](mailto:support@essentialed.com)  
(800) 931-8069 ext. 4

